

TRUEtome™

Preloaded Cannulating Sphincterotome

**Boston
Scientific**
Advancing science for life™

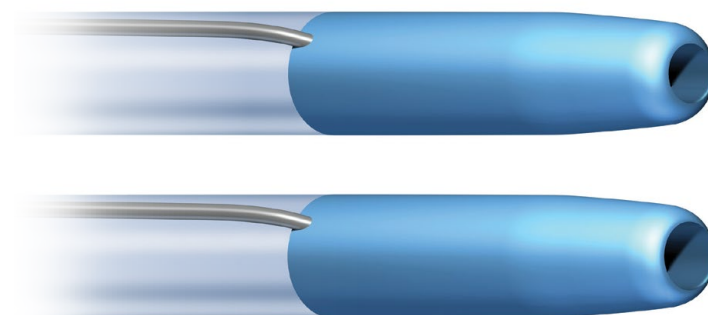
TRUEtome™ Jag TRUEtome™ Dreamwire™ TRUEtome™ Hydra

Part of a complete portfolio
of devices for the treatment
of pancreaticobiliary diseases.



The TRUEtome™ Preloaded Cannulating Sphincterotome has the potential to bring utility to every endoscopic retrograde cholangiopancreatography (ERCP).

- **Choice in tip size** accommodates varying patient anatomies and facilitates cannulation.
- **Controlled steerability** provides optimal positioning for ERCP cannulation and sphincterotomy, and enables intraductal selective cannulation to aid in accessing the pancreaticobiliary tree.
- **Handle brake** helps maintain catheter bow and added control during sphincterotomy.



3.9F
(.018-.025 in)

4.4F
(.018-.035 in)

3.9F = 1.30mm. 4.4F = 1.47mm

3.9F (1.30mm) available only with preloaded Jagwire High Performance Guidewire

TRUEtome Jagwire 3.9F (1.30mm) Sphincterotome accepts a maximum guidewire of .025 in (0.64mm)

“A modern sphincterotome facilitates a smooth reliable access to the CBD or PD. Features like consistent orientation, atraumatic tip with various configurations and guidewire compatibility are essential for successful cannulation. The TRUEtome™ steerable tip can be helpful for aligning the cut wire before sphincterotomy and can simplify a targeted positioning of a guidewire to the desired duct.”

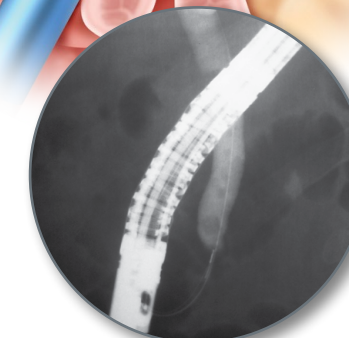
—Prof. Horst Neuhaus
EVK, Düsseldorf, Germany

DirecTip™ Technology

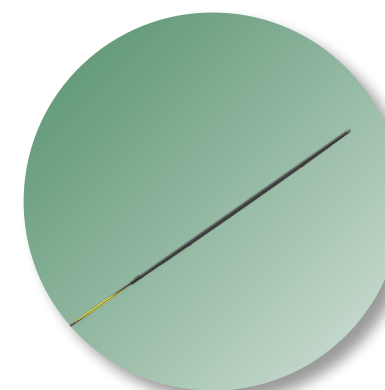
The TRUEtome™ Preloaded Cannulating Sphincterotome has a center-lumen design that is the result of DirecTip Technology. The center lumen allows the guidewire to extend from the center of the sphincterotome to aid in positioning and facilitates wireguided cannulation. Wireguided Cannulation may help reduce the risk of post-ERCP pancreatitis compared with the standard contrast injection method.^{1*}

DirecTip Technology enables the guidewire and contrast to be directed into the duct from the center of the tip, helping the physician inject contrast into the intended duct. The tapered tip has a smooth surface that enables placement into small or tight orifices.

Center-lumen design

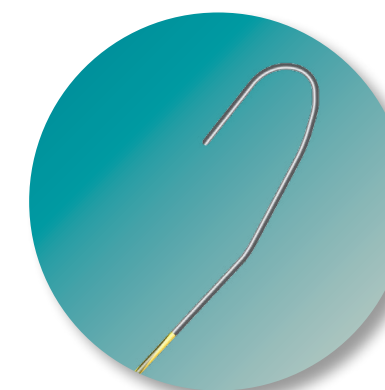


3 guidewire options to meet every need



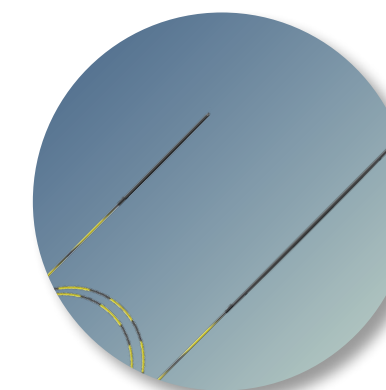
Jagwire™

A hydrophilic distal 5cm tip helps facilitate selective cannulation and negotiation of difficult anatomy.



Dreamwire™

10cm hydrophilic Dream Tip™ End designed to form an Alpha loop to facilitate passage through a tight stricture.



Hydra Jagwire™

A 10cm hydrophilic Dream Tip™ End on one end and a 5cm Jagwire on the other end. The 10cm tip is designed to form an Alpha loop to facilitate passage through a tight stricture.

all with

Endo-Glide™ coating

promotes smooth tracking through the endoscope and anatomy



Tungsten-filled tip

aids in fluoroscopic visualization



Striped movement markers

aid in visualization device exchange

1. Cennamo et al. Can a Wire-Guided Cannulation Technique Increase Bile Duct Cannulation Rate and Prevent Post-ERCP Pancreatitis?: A Meta-Analysis of Randomized Controlled Trials. The American Journal of Gastroenterology, 2009.

* Results from case studies are not predictive of results in other cases. Results in other cases may vary.

TRUEtome™

Preloaded Cannulating Sphincterotome

Ordering Information

TRUEtome™ Jag

Product Code	Description	Cut Wire Length (mm)	Tip Length (mm)	Tip O.D. (F)	Preloaded Guidewire
M00583080	TRUEtome Jag 39 Cannulating Sphincterotome	20	5	3.9	Jagwire™ Guidewire .025in / 450cm
M00583090	TRUEtome Jag 44 Cannulating Sphincterotome	20	5	4.4	Jagwire Guidewire .025in / 450cm
M00583100	TRUEtome Jag 44 Cannulating Sphincterotome	20	5	4.4	Jagwire Guidewire .035in / 450cm
M00583110	TRUEtome Jag 44 Cannulating Sphincterotome	20	5	4.4	Jagwire Guidewire .035in / Stiff 450cm
M00583120	TRUEtome Jag 39 Cannulating Sphincterotome	30	5	3.9	Jagwire Guidewire .025in / 450cm
M00583130	TRUEtome Jag 44 Cannulating Sphincterotome	30	5	4.4	Jagwire Guidewire .025in / 450cm
M00583140	TRUEtome Jag 44 Cannulating Sphincterotome	30	5	4.4	Jagwire Guidewire .035in / 450cm
M00583150	TRUEtome Jag 44 Cannulating Sphincterotome	30	5	4.4	Jagwire Guidewire .035in / Stiff 450cm

TRUEtome™ Dreamwire™

Product Code	Description	Cut Wire Length (mm)	Tip Length (mm)	Tip O.D. (F)	Preloaded Guidewire
M00583190	TRUEtome Dreamwire 44 Cannulating Sphincterotome	20	5	4.4	Dreamwire™ Guidewire .035in / 450cm
M00583210	TRUEtome Dreamwire 44 Cannulating Sphincterotome	30	5	4.4	Dreamwire Guidewire .035in / 450cm

TRUEtome™ Hydra

Product Code	Description	Cut Wire Length (mm)	Tip Length (mm)	Tip O.D. (F)	Preloaded Guidewire
M00583160	TRUEtome Hydra 44 Cannulating Sphincterotome	20	5	4.4	Hydra Jagwire™ Guidewire.035in / 450cm
M00583170	TRUEtome Hydra 44 Cannulating Sphincterotome	30	5	4.4	Hydra Jagwire Guidewire.035in / 450cm



**Boston
Scientific**
Advancing science for life™

www.bostonscientific-international.com

All cited trademarks are the property of their respective owners.
CAUTION: Law restricts these devices to sale by or on the order of a physician. Indications, contraindications, warnings and instructions for use can be found in the product labelling supplied with each device. Information for the use only in countries with applicable health authority product registrations.
ENDO-267901-AA September 2014. Printed in the The Netherlands by De Budelse/Gosling.

© 2014 Boston Scientific Corporation
or its affiliates. All rights reserved.
DINEND2334EA